

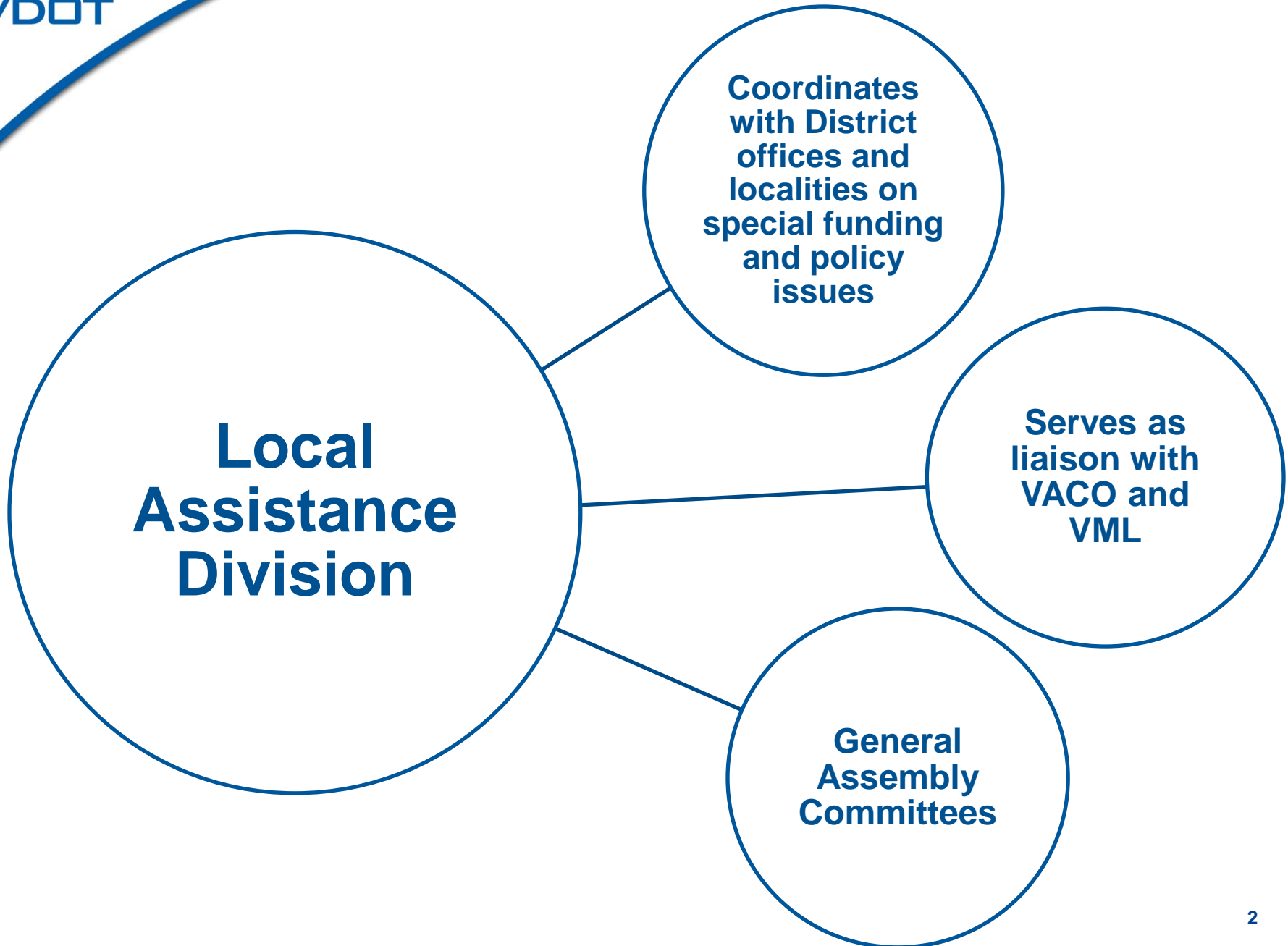


Local Partnerships for Transportation

November 10, 2013

Jennifer B. DeBruhl

Director, Local Assistance Division



Local Programs

**Revenue
Sharing**

**Access
Programs (EDA,
Rec, Airport)**

**Transportation
Alternatives**

**Rural Rustic
Roads**

Virginia Byways

**Local System
(Urban/
Secondary)**

**Federal Lands
Access Program**

Coal Severance

**Urban
Construction
Initiative**

**Training/
Outreach**

**Locally
Administered
Projects**

Devolution



-
- ★ Localities that applied for Allocations of \$10 M
 ▲ Localities that applied for Allocations \$1 M and greater
 ● Localities that applied for Allocations up to \$1 M
- The map displays the state of Virginia, divided into its constituent localities. The localities are color-coded based on the amount of funding they applied for: green stars for \$10 M, green triangles for \$1 M and greater, and red circles for up to \$1 M. The map also shows major roads and water bodies. A north arrow is located in the top right corner.

Transportation Alternatives Program

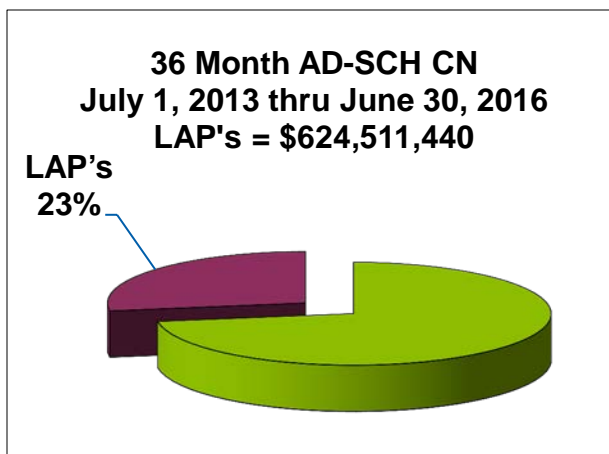
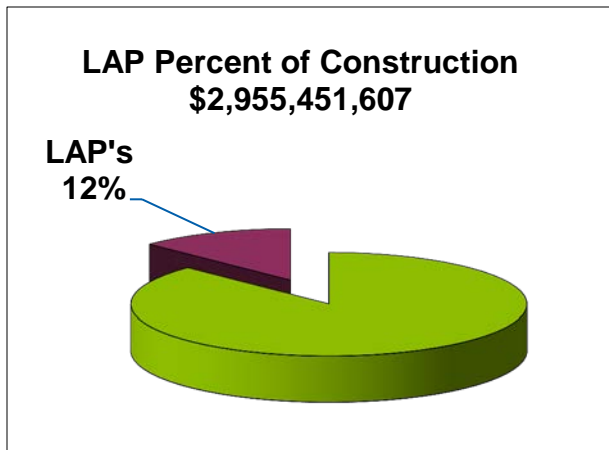
These projects are intended to improve non-motorized transportation, enhance the public's travel experience, revitalize communities and improve the quality of life.



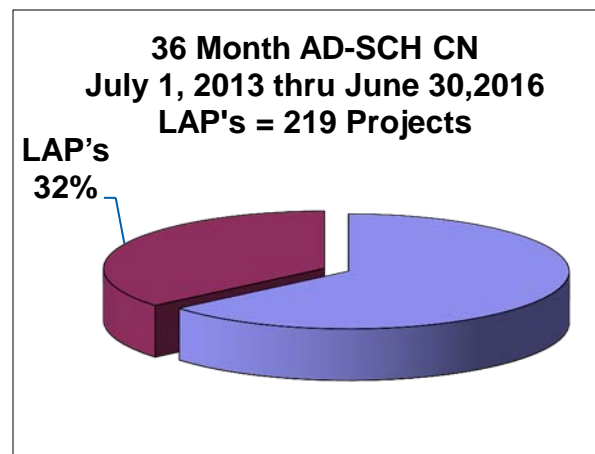
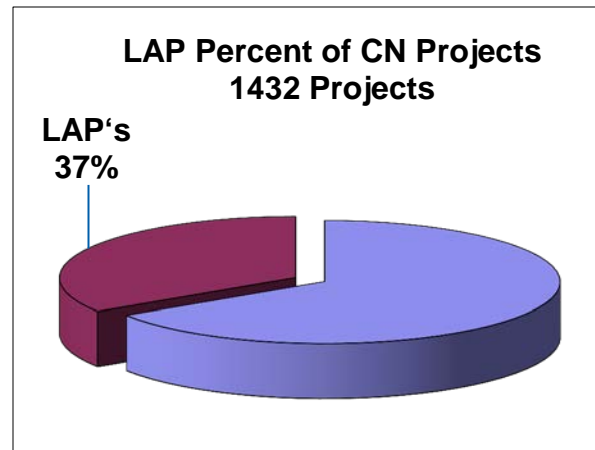
Program Delivery

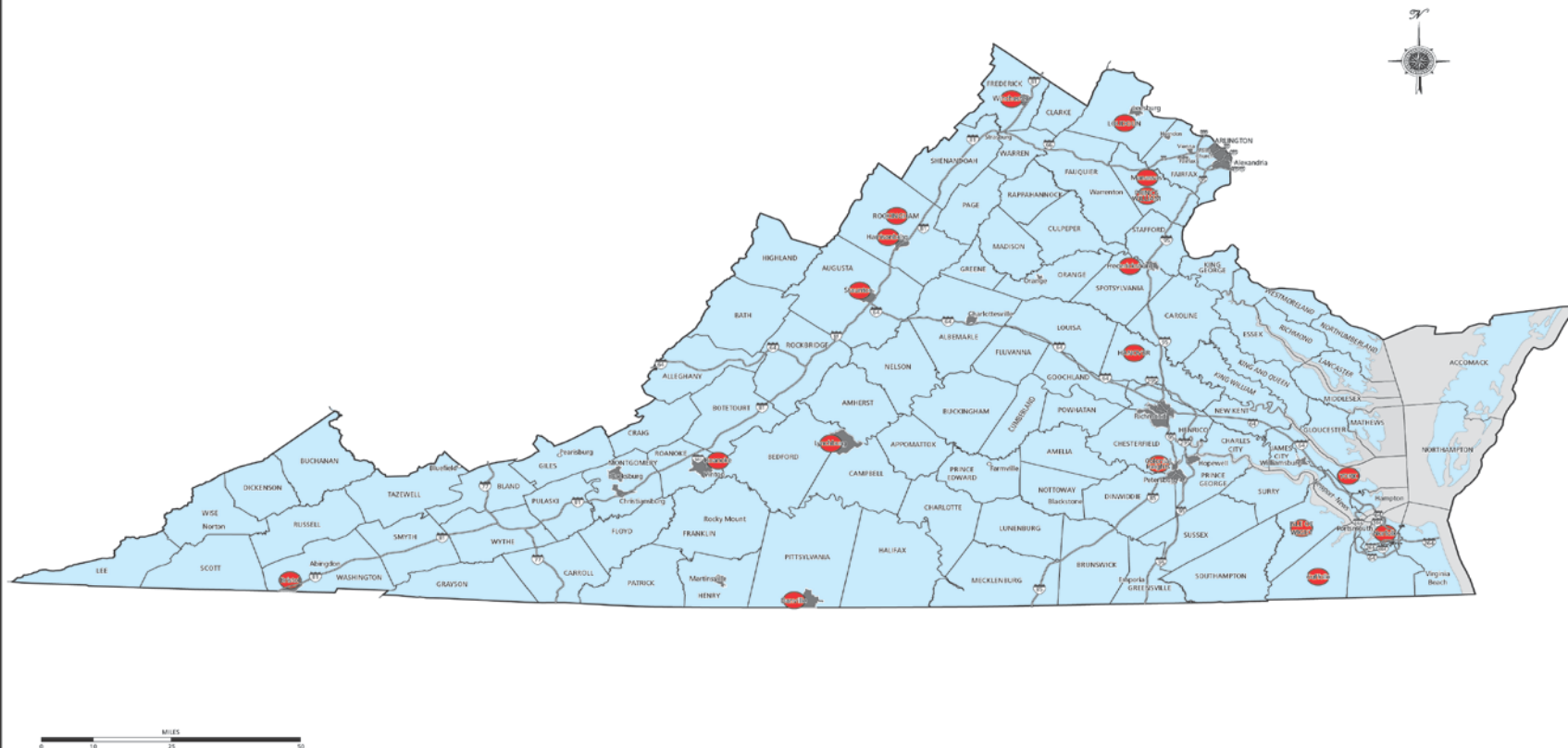
Reliance on our Local Partners

LAP Share of Construction Program
Dollars



LAP Share of Construction Program
Projects





Network for Success

Local Programs Workshop



September 16-18, 2014
Hotel Roanoke



Local Partnerships for Transportation

November 10, 2013

Jennifer B. DeBruhl

Director, Local Assistance Division