

Early Childhood Home Visiting

A decorative horizontal bar with a pattern of vertical stripes in various colors including blue, yellow, and orange.

Partnering with Local Government

A solid dark blue horizontal bar with rounded ends.

Cathryn O'Connell Lowe, CFRE
Development Counsel
CHIP of Virginia &
Parents as Teachers State Office

A horizontal decorative bar consisting of a series of vertical stripes in various colors including blue, orange, yellow, and green.

**CHIP Changes Lives,
2 Generations at a Time**

Home Visiting



Strategy for delivering different services with different eligibility criteria to different families & children with different needs.

One size does not fit all.

What is Home Visiting?



- **Visits made by RNs, community health workers, parent educators**
- **Focus on parents to impact children's health (physical, mental, oral), child development and school readiness**
- **Focus on maternal and child health, positive parenting practices, safe home environments, and access to services.**

What is Home Visiting?



- **Voluntary**
- **Targets families with multiple risk factors**
- **Family enrollment averages 2 years**
- **Supports coordination of services**
- **Addresses issues holistically, on family's turf**
- **Various “brands” of home visiting in Virginia**
- **Specifically identified in the Affordable Care Act**

Why Home Visiting?



Knowledge
+ Relationship
Behavior Change

Home Visiting



Serving Families who are:

- **Pregnant or have children under 6yrs and**
- **Low income (Medicaid elig.)**

A Portrait of CHIP Families



Average household helped by CHIP:

Has **2** children

34% have two parents in the home

18% are teen moms

56% of children are behind on recommended well visits (checkups)

30% have a family member with a chronic medical condition (asthma, diabetes, etc.)

17% do not speak English as a primary language

20% moved more than once in the prior year

43% of moms do not have a physician

50% of moms aren't high school graduates and don't have a GED

Home Visiting Models in Virginia



Evidence Based Models

- CHIP*/PAT
- Healthy Families*
- Nurse Family Partnership
- Early Head Start

Evidence Informed Models

- Resource Mothers*
- Project Link*
- Healthy Start

*Partially supported by GF/TANF

Unmet Need in Virginia



- 84,000 low income children under 5
- <20% children in need receiving HV services
- 35% state funding reduction since 2009

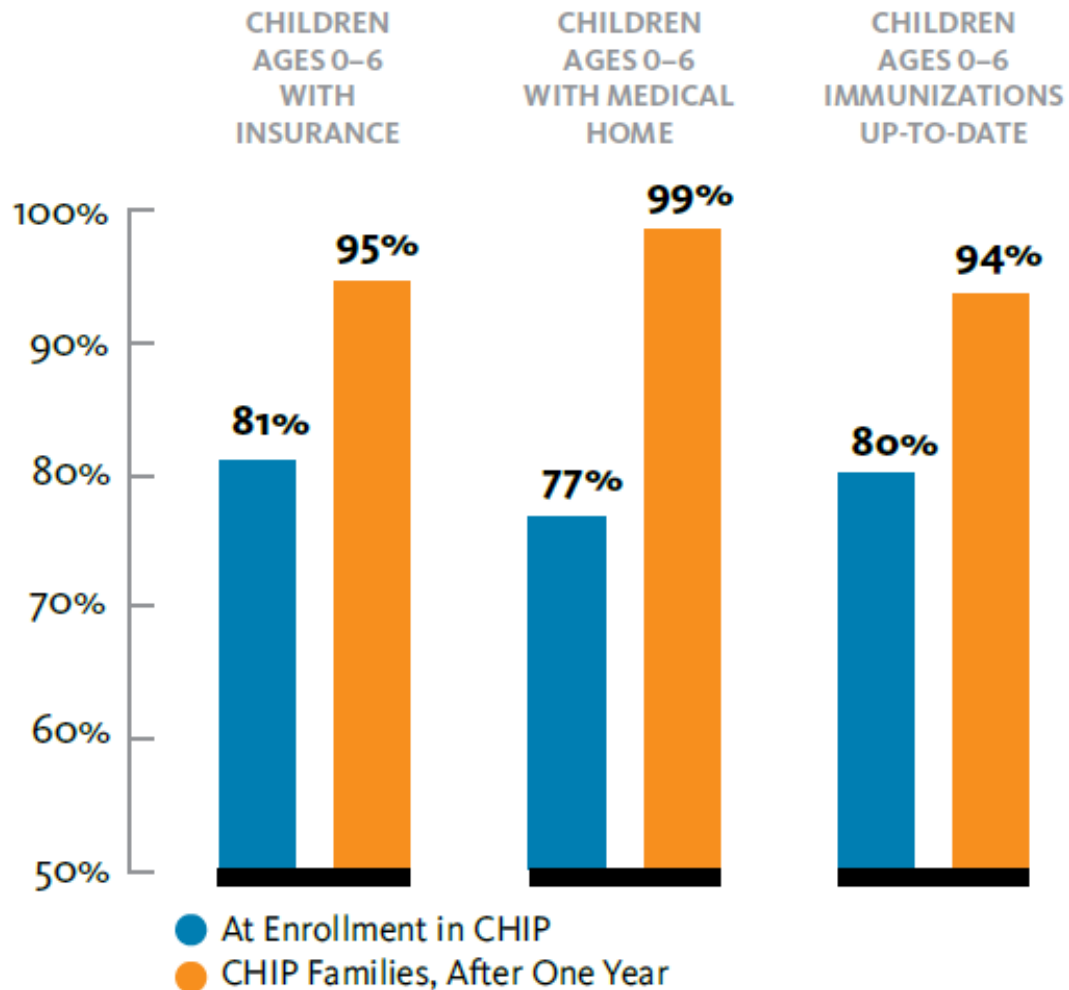
Home Visiting Works



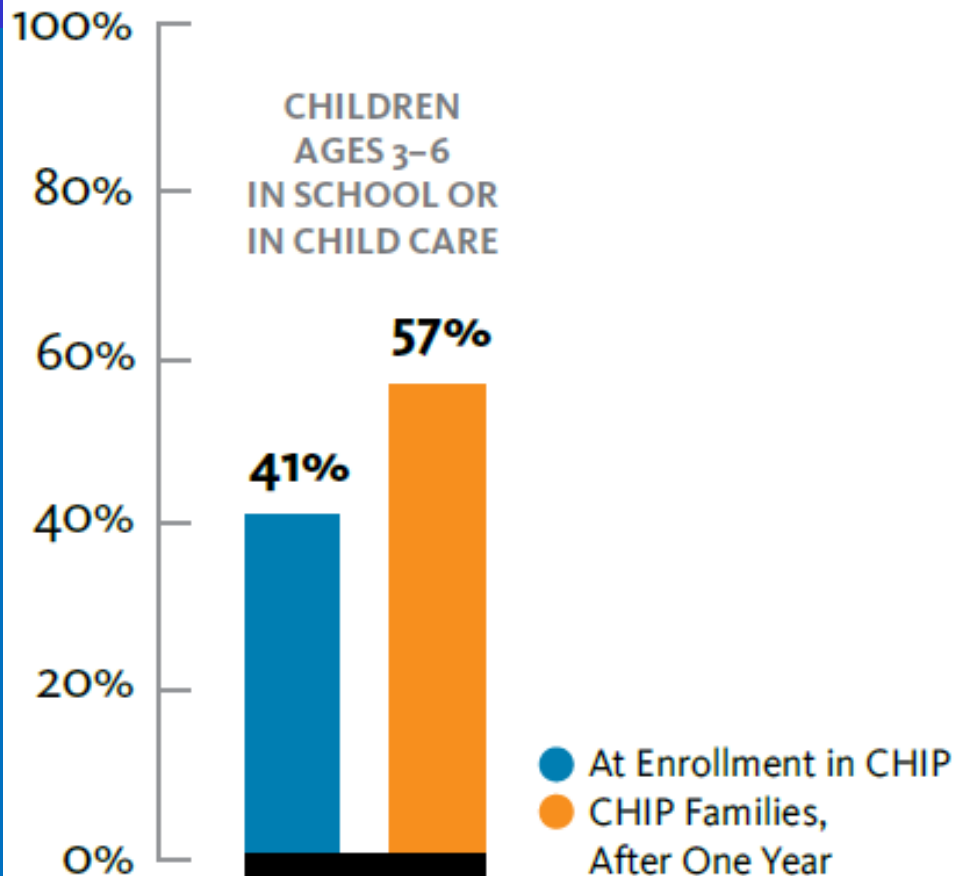
Outcomes

- Short term
- Long term

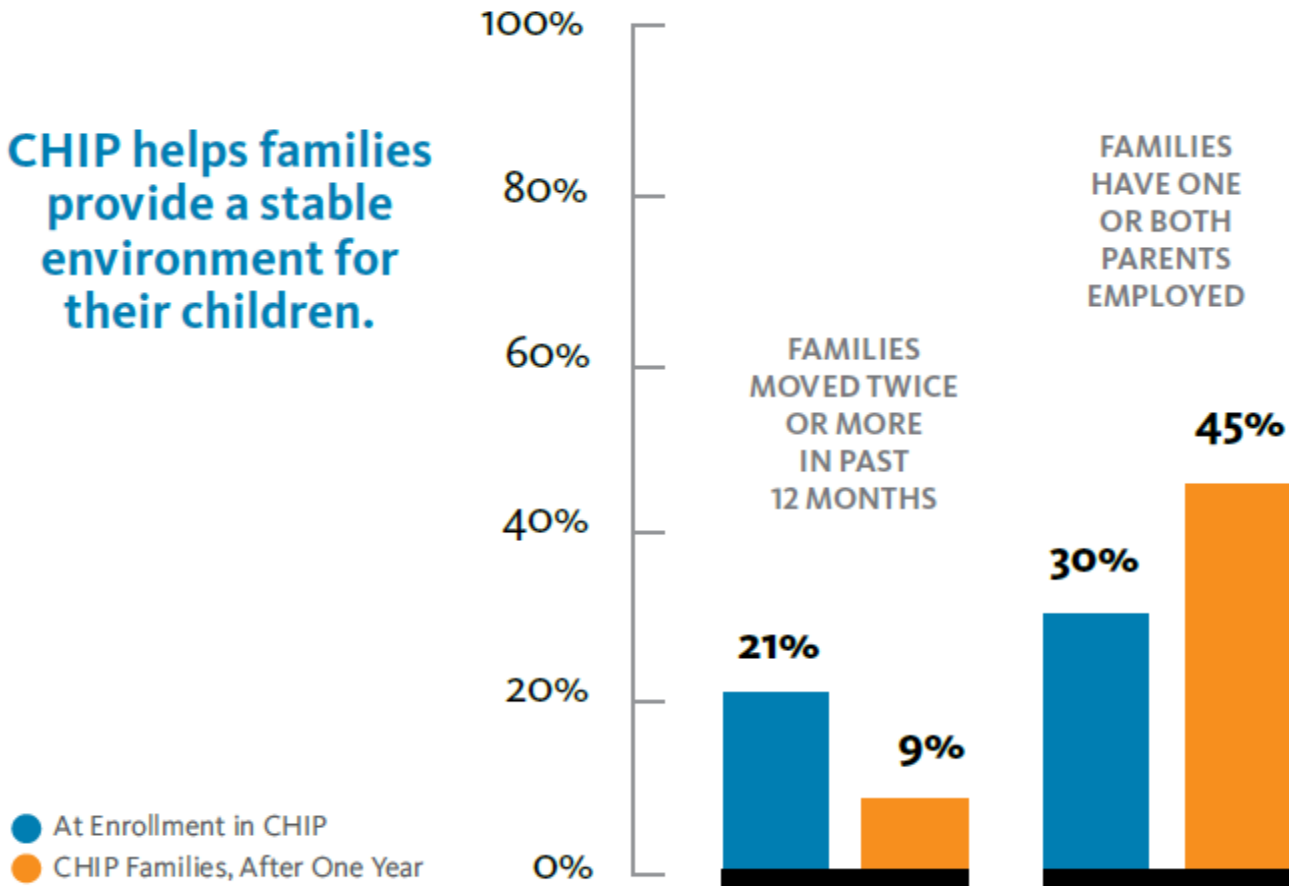
CHIP kids are much more likely to have medical insurance, a medical home and have their immunizations up-to-date.



CHIP kids are better prepared for kindergarten and parents are able to work.



CHIP helps families provide a stable environment for their children.



Healthy Families' Outcomes



- 90% healthy birth weights
- 97% have a primary care physician
- 92% immunizations up to date
- 99.3% had no abuse and neglect cost
 - savings of \$18,901,080 over a lifetime

Savings for Local Governments

A decorative horizontal bar with a repeating pattern of vertical stripes in various colors including blue, yellow, orange, and green.

- **Early Intervention**
- **Child Abuse/Neglect**
- **Special Education**
- **Academic Remediation**
- **Foster Care**
- **Other CSA costs**

Long Term Savings



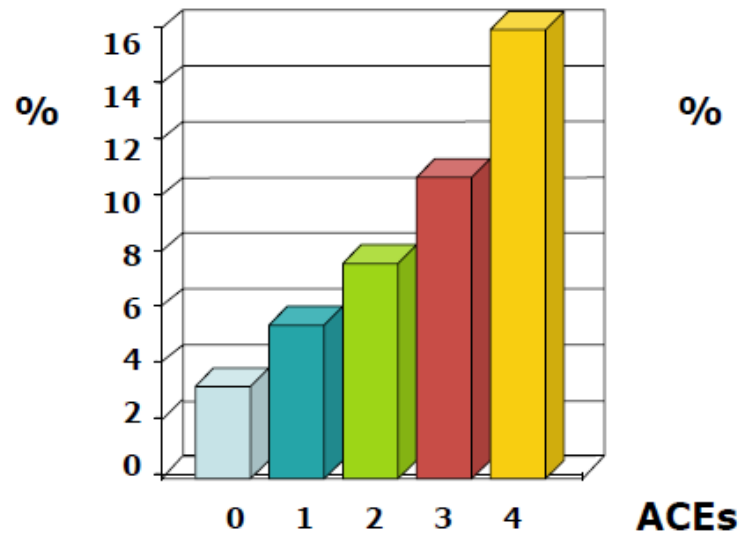
Adverse Childhood Experiences Study (ACES)

- Childhood Abuse
- Neglect
- Family Dysfunction
 - witnessing domestic violence
 - parental marital discord
 - living with substance abusing, mentally ill, or criminal household members

Long Term Savings

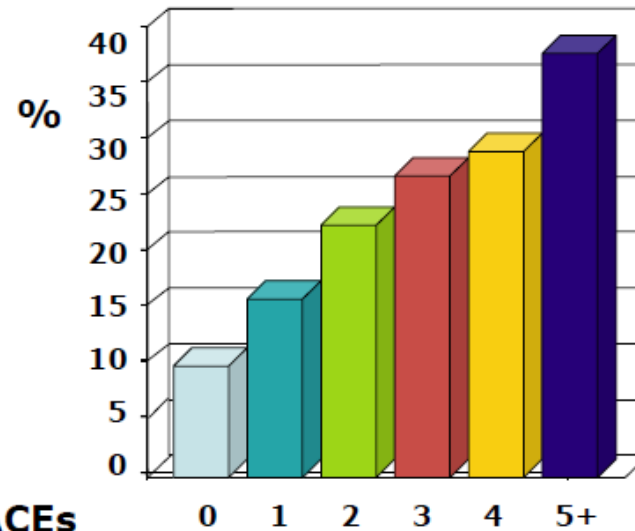
Risk Factors for Adult Substance Abuse are Embedded in Adverse Childhood Experiences

Self-Report: Alcoholism



Source: Dube et al, 2002

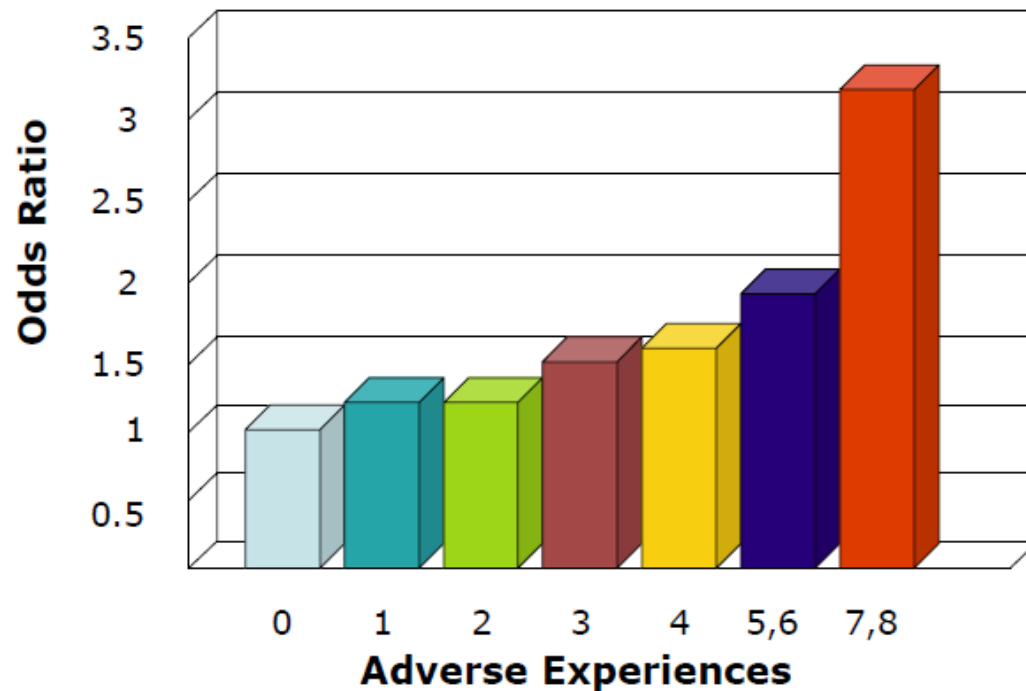
Self-Report: Illicit Drugs



Source: Dube et al, 2005

Long Term Savings – Heart Disease

Risk Factors for Adult Heart Disease are Embedded in Adverse Childhood Experiences



Source: Dong et al, 2004

Early Childhood Home Visiting

A decorative horizontal bar consisting of a series of vertical stripes in various colors including blue, yellow, orange, and green.

**Partnering with
Local Government**

More Information



- www.CHIPofVirginia.org
- <http://pcav.org/healthy-families/>
- www.nursefamilypartnership.org
- www.vdh.virginia.gov (Resource Mothers)
- www.dbhds.virginia.gov (Project Link)
- www.parentsasteachers.org
- www.acesstudy.org
- www.homevisitingva.com